

WORKS & COMPANY LTD  
 100, BRISTOL ROAD, BRISTOL, ENGLAND  
 TEL: 0117 925 1111 FAX: 0117 925 1112  
 WWW.HOWDEN.COM

NO	DATE	DESCRIPTION
1	17/08/08	ISSUED FOR CONSTRUCTION
2	17/08/08	ISSUED FOR CONSTRUCTION
3	17/08/08	ISSUED FOR CONSTRUCTION
4	17/08/08	ISSUED FOR CONSTRUCTION
5	17/08/08	ISSUED FOR CONSTRUCTION
6	17/08/08	ISSUED FOR CONSTRUCTION
7	17/08/08	ISSUED FOR CONSTRUCTION
8	17/08/08	ISSUED FOR CONSTRUCTION
9	17/08/08	ISSUED FOR CONSTRUCTION
10	17/08/08	ISSUED FOR CONSTRUCTION

NO	DATE	DESCRIPTION
1	17/08/08	ISSUED FOR CONSTRUCTION
2	17/08/08	ISSUED FOR CONSTRUCTION
3	17/08/08	ISSUED FOR CONSTRUCTION
4	17/08/08	ISSUED FOR CONSTRUCTION
5	17/08/08	ISSUED FOR CONSTRUCTION
6	17/08/08	ISSUED FOR CONSTRUCTION
7	17/08/08	ISSUED FOR CONSTRUCTION
8	17/08/08	ISSUED FOR CONSTRUCTION
9	17/08/08	ISSUED FOR CONSTRUCTION
10	17/08/08	ISSUED FOR CONSTRUCTION

**HOWDEN PROCESS COMPRESSORS**

SECTIONAL ARRANGEMENT OF SEEGAN  
 BLOWER WITH COMBINED VANE CONTROL

SCALE: 1:1  
 LOCATION: MARTSA EAST

DWG No: CEN3915/08/001

**NATSIONAALNA ELEKTRICHESKA  
 KOMPANIA (NEK)**

CONSORTIUM **ITA** KLUCKEN

PROJECT: FOOD-PLANT UNIT 7 / 8 - MARTSA EAST 2

DATE: 17/08/08

SCALE: 1:1

DWG No: CEN3915/08/001

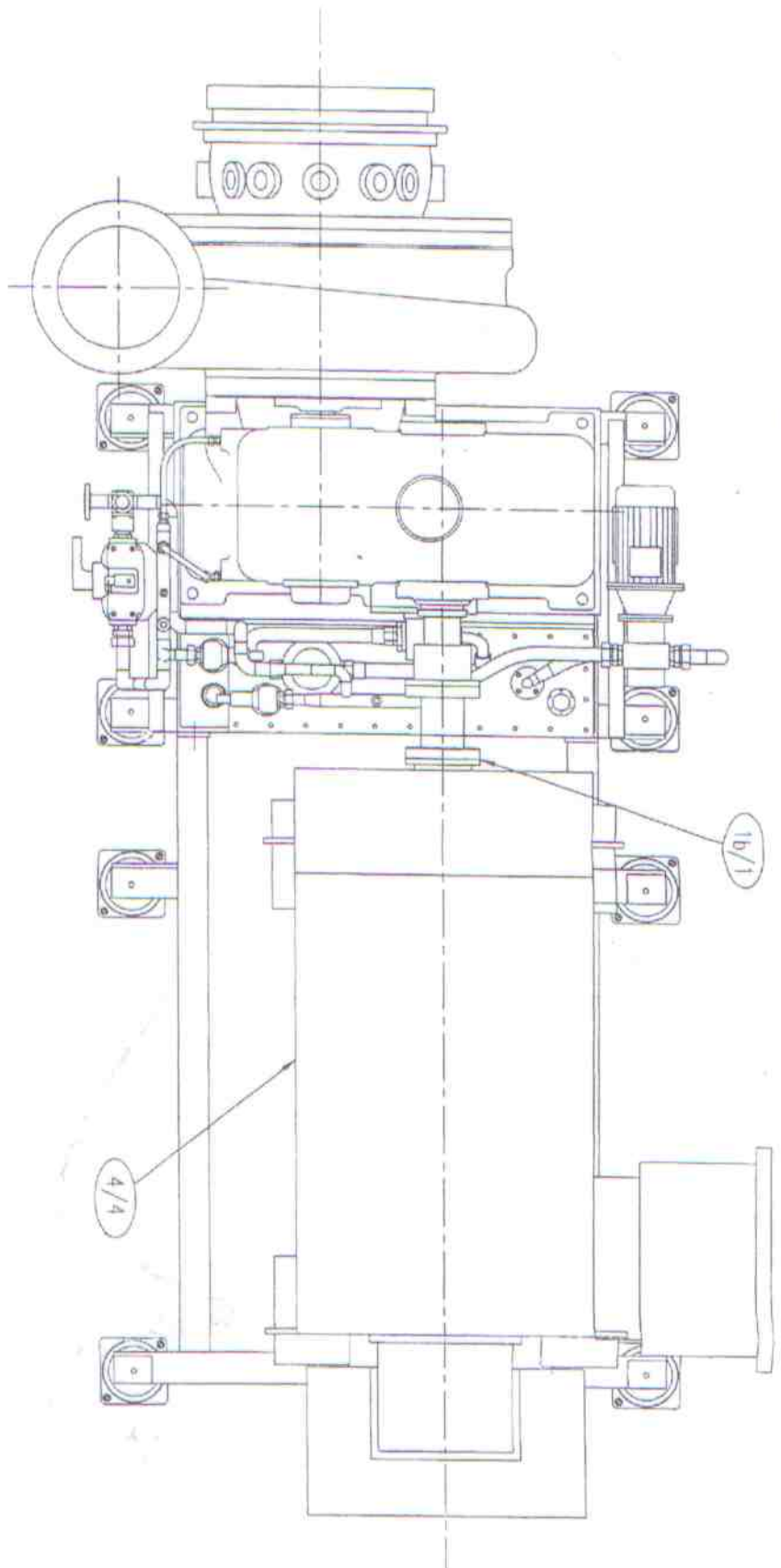
REV: 1

DATE: 17/08/08

BY: [Signature]

CHECKED: [Signature]

APPROVED: [Signature]



REVISIONS

NO	DATE	DESCRIPTION
1	11/08/02	ISSUED FOR TENDER
2	11/08/02	ISSUED FOR TENDER
3	11/08/02	ISSUED FOR TENDER
4	11/08/02	ISSUED FOR TENDER
5	11/08/02	ISSUED FOR TENDER

DATE & COMPANY BY

PROJECT: CEN1915/08/002

SCALE: 1:1

DATE: 11/08/02

BY: [Signature]

CHECKED: [Signature]

APPROVED: [Signature]

**HOWDEN PROCESS COMPRESSORS**

PLAN LAYOUT OF SPROUY BLOWER WITH COMBINED VANE CONTROL

SCALE: 1:1

DATE: 11/08/02

BY: [Signature]

CHECKED: [Signature]

APPROVED: [Signature]

**NATSIONALNA ELEKTRICHESKA KOMPANIA (NEK)**

CONSORTIUM: **FINA KADOMVER**

PROJECT: **FOU-PLANT UNIT 7 / 8 - MARISA EAST 2**

DATE: 11/08/02

BY: [Signature]

CHECKED: [Signature]

APPROVED: [Signature]

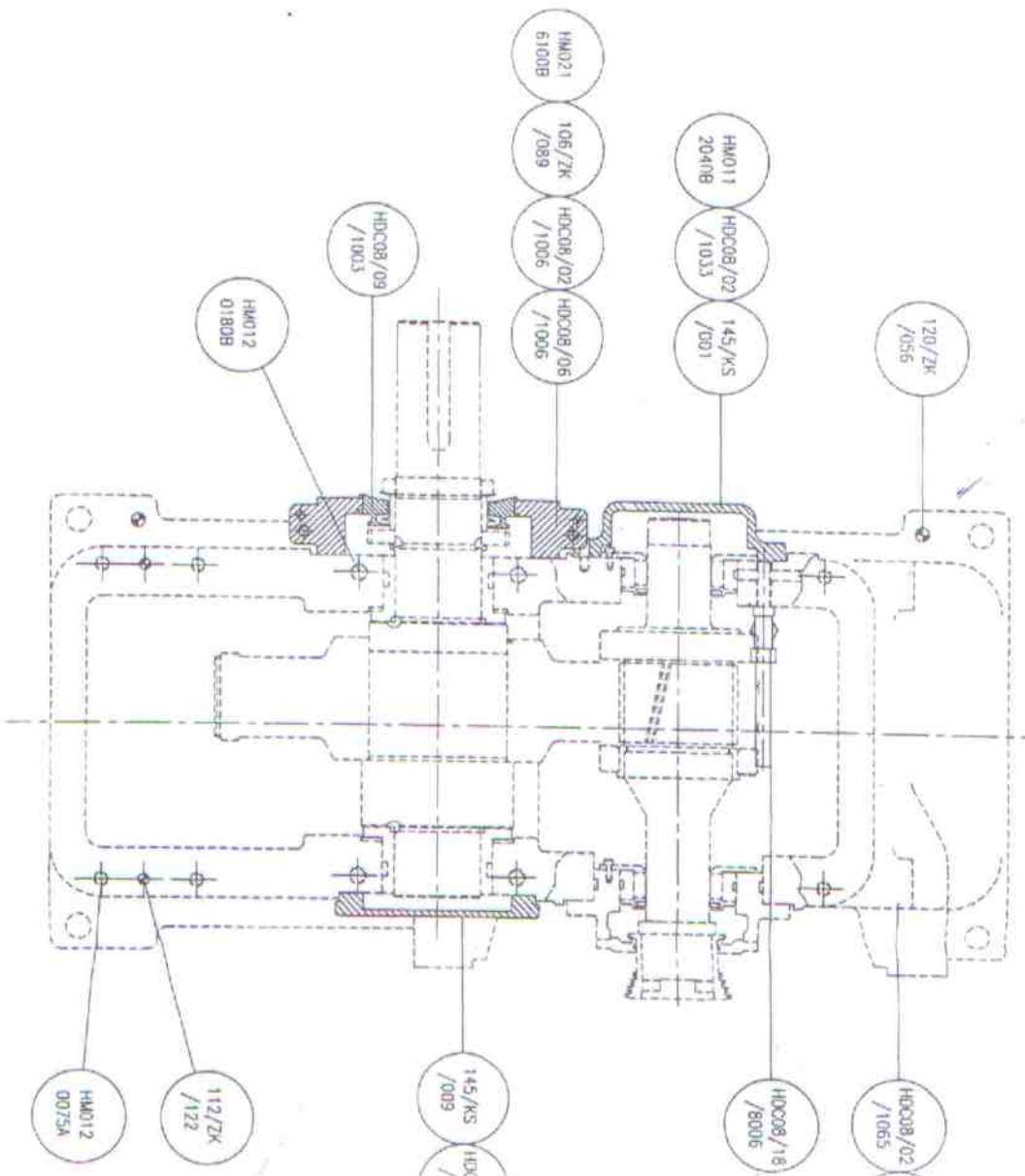
SCALE: 1:1

DATE: 11/08/02

BY: [Signature]

CHECKED: [Signature]

APPROVED: [Signature]



JAMES HOWDEN & COMPANY LTD THE DRAWING IS CONSIDERED VALID FOR THE PURPOSES OF JAMES HOWDEN AND THEIR SUPPLIERS UNLESS OTHERWISE STATED. THIS DRAWING IS THE PROPERTY OF JAMES HOWDEN AND SHALL REMAIN THEIR PROPERTY. NO PART OF IT IS TO BE REPRODUCED OR TRANSMITTED IN ANY FORM OR BY ANY MEANS, ELECTRONIC OR MECHANICAL, INCLUDING PHOTOCOPYING, RECORDING, OR BY ANY INFORMATION STORAGE AND RETRIEVAL SYSTEM, WITHOUT THE WRITTEN PERMISSION OF THE COMPANY.	
UNLESS OTHERWISE STATED DIMENSIONS IN MILLIMETERS UNLESS SPECIFIC DIMENSIONS ARE GIVEN IN PARENTHESES	UNLESS OTHERWISE STATED DIMENSIONS IN MILLIMETERS UNLESS SPECIFIC DIMENSIONS ARE GIVEN IN PARENTHESES
UNLESS OTHERWISE STATED DIMENSIONS IN MILLIMETERS UNLESS SPECIFIC DIMENSIONS ARE GIVEN IN PARENTHESES	UNLESS OTHERWISE STATED DIMENSIONS IN MILLIMETERS UNLESS SPECIFIC DIMENSIONS ARE GIVEN IN PARENTHESES
UNLESS OTHERWISE STATED DIMENSIONS IN MILLIMETERS UNLESS SPECIFIC DIMENSIONS ARE GIVEN IN PARENTHESES	UNLESS OTHERWISE STATED DIMENSIONS IN MILLIMETERS UNLESS SPECIFIC DIMENSIONS ARE GIVEN IN PARENTHESES

DATE: 24/8/01 W.F.: [Signature] CHECKED: 24/8/01 APPROVED: 24/8/01	DATE: 23/8/01 W.F.: [Signature] CHECKED: 23/8/01 APPROVED: 23/8/01
ICH 4667 FIXINGS ETC. FOR OIL PUMP DRIVE COVER CORRECTED.	ICH 4655 NUMBER FOR SPARE PART ASSEMBLY CHANGED & ADDITIONAL ITEMS INCLUDED IN B.O.M.




**NATIONÁLNÁ ELEKTRICKÁ KOMPANIA (NEK)**  
**KONSORTIUM FMA KLOCKNER GOMPA**

PROJECT: FGD-PLANT UNIT 7/8 - MARTSA EAST 2

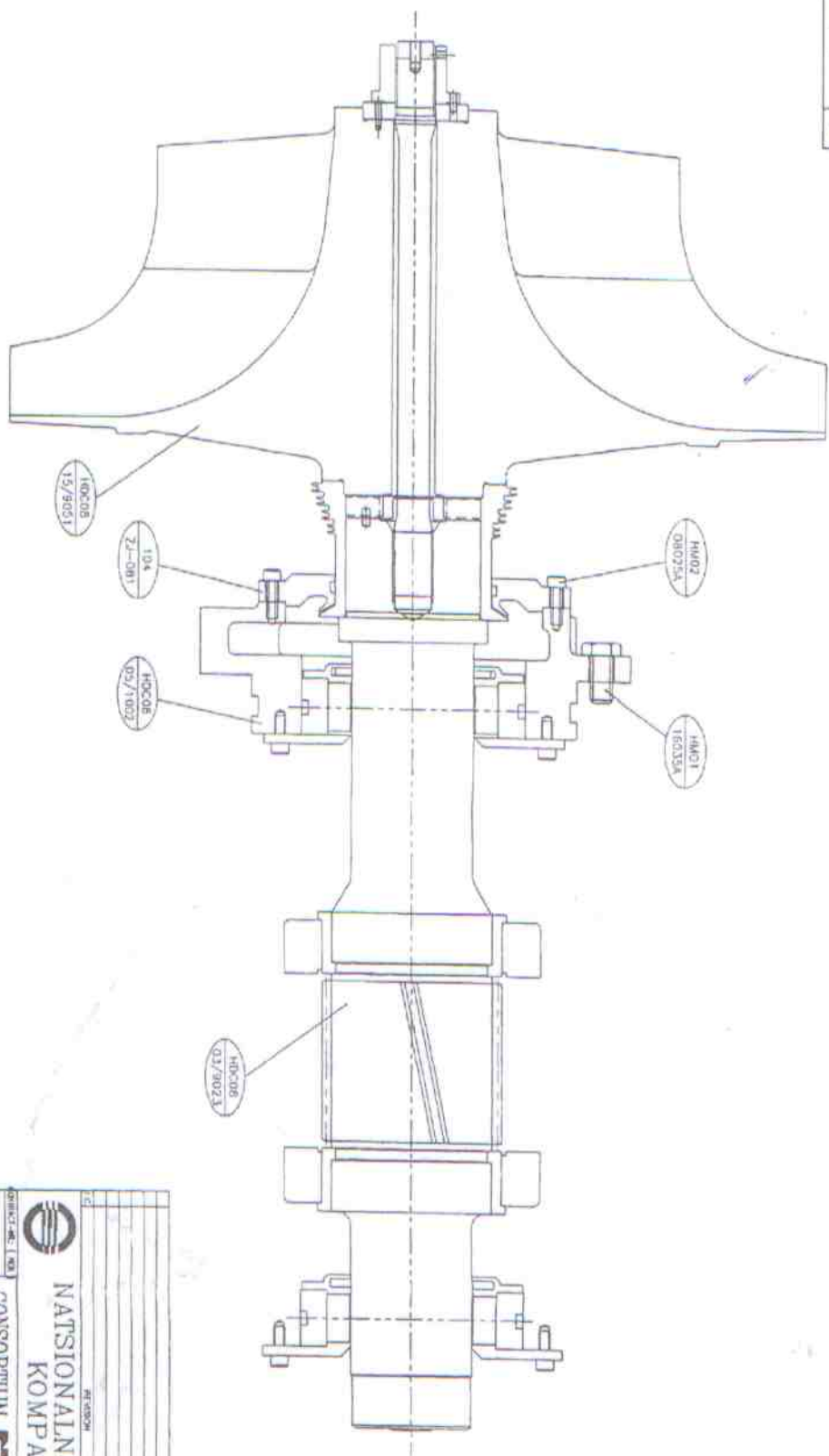
DATE: 20/8/01  
 DRAWN: [Signature]  
 CHECKED: [Signature]  
 SCALE: A2

LAST PLOT: 1506A

**HOWDEN PROCESS COMPRESSORS**

GEARBOX SHELL & COVERS ASSEMBLY  
 FOR SGBDAN BLOWER  
 TESSAG  
 LOCATION: MARTSA EAST

DRG No	HDCC08/02/9048
SCALE	C



HOWDEN PROCESS COMPRESSORS  
 14125 HOWDEN & COMPANY LTD  
 THE PLAINS OF COMBERGHE AND  
 ST. PETER'S CHURCH, HOWDEN  
 14125, SCOTLAND  
 ALL RIGHTS RESERVED  
 © 1988

DATE	DRAWN	CHECKED	APPROVED	DATE	DRAWN	CHECKED	APPROVED

DATE	DRAWN	CHECKED	APPROVED

**NATIONALNA ELEKTRICHESKA  
 KOMPANIA ( NEK )**

CONSORTIUM **FINA** **KLOKOVER** **SHIMU**

PROJECT: FGD-PLANT UNIT 7/8 - MARTSA EAST 2

SCALE: 1:1

DATE: 27/9/01

DESIGNED BY: MA78 JVC

CHECKED BY: 00615104

APPROVED BY: A

**HOWDEN PROCESS COMPRESSORS**

14125 HOWDEN & COMPANY LTD

THE PLAINS OF COMBERGHE AND  
 ST. PETER'S CHURCH, HOWDEN  
 14125, SCOTLAND

ALL RIGHTS RESERVED  
 © 1988

IMPPELLER & PINION SHAFT ASSEMBLY  
 TYPE SGOAN BLOWER

CUSTOMER: TESSAG

LOCATION: MARTSA EAST

DRG No: HDC08/15/9050

SCALE: A2

DATE: 27/9/01

APPROVED BY: A